

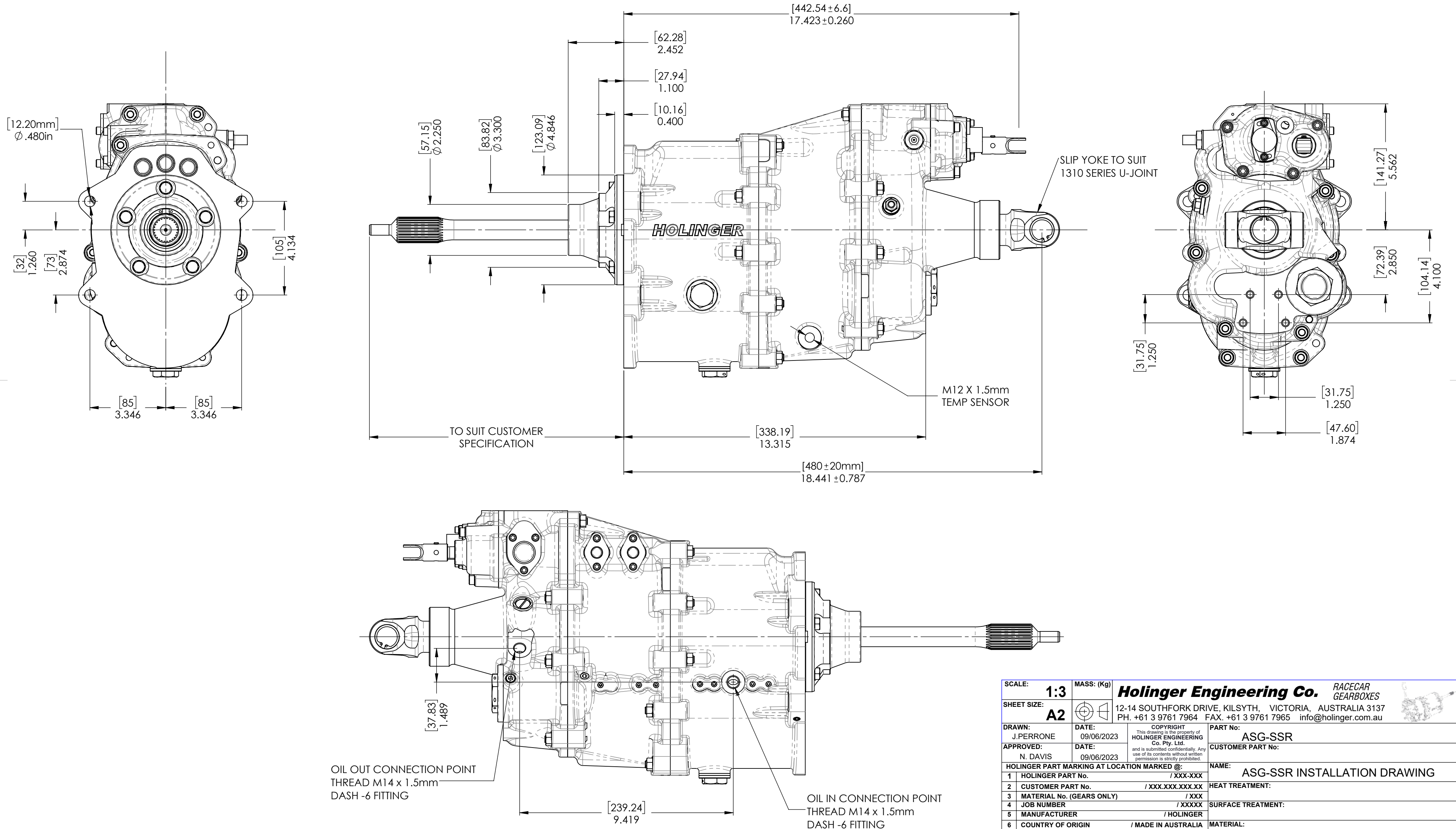
SG-SSR SEQUENTIAL TRANSMISSION


TRANSMISSION INCLUDES:

- GEARBOX
- CUSTOM QUILL SHAFT
- CABLE OPERATED NEUTRAL LOCKOUT

OPTIONS INCLUDE:

- BELLHOUSING
- FRONT ADAPTOR
- GEAR LEVER
- BILLET SLIP YOKE



| | | | | |
|--|---------------------------|---|--|--|
| SCALE: | 1:3 | MASS: (Kg) | RACECAR GEARBOXES | |
| SHEET SIZE: | A2 |  | Holinger Engineering Co. Pty. Ltd. 12-14 SOUTHFORK DRIVE, KILSYTH, VICTORIA, AUSTRALIA 3137 PH. +61 3 9761 7964 FAX. +61 3 9761 7965 info@holinger.com.au | |
| DRAWN: | J. PERRONE | DATE: | 09/06/2023 | COPYRIGHT This drawing is the property of HOLINGER ENGINEERING Co. Pty. Ltd. and is submitted confidentially. Any use of its contents without written permission is strictly prohibited. |
| APPROVED: | N. DAVIS | DATE: | 09/06/2023 | PART No: ASG-SSR CUSTOMER PART No: |
| HOLINGER PART MARKING AT LOCATION MARKED @: | | | | |
| 1 | HOLINGER PART No. | / XXX-XXX | | |
| 2 | CUSTOMER PART No. | / XXX.XXX.XXX.XX | | |
| 3 | MATERIAL No. (GEARS ONLY) | / XXX | | |
| 4 | JOB NUMBER | / XXXXX | | |
| 5 | MANUFACTURER | / HOLINGER | | |
| 6 | COUNTRY OF ORIGIN | / MADE IN AUSTRALIA | | |
| 7 | CUSTOMER LOGO | /  | | |
| GENERAL TOLERANCES UNLESS OTHERWISE STATED: | | | | |
| | LINEAR | ANGULAR | DIAMETRAL | |
| | 0.000 ± 0.002 | 0 ± 1° | 0.000 ± 0.002 | |
| | 0.00 ± 0.005 | 0.0 ± 0.2° | 0.00 ± 0.005 | |
| GENERAL MACHINED SURFACE FINISH: | | | | |
| <div style="display: flex; align-items: center;"> <div style="margin-right: 20px;">  </div> <div style="display: flex; gap: 10px;"> <div> 63 MILLED </div> <div> 32 TURNED </div> <div> 8 GROUND </div> </div> </div> | | | | |
| ALL DIMENSIONS IN INCHES UNLESS OTHERWISE STATED | | | | |
| CHECK DIMENSIONS ACCORDING TO HOLINGER I.P.I. SHEET | | | | PRINTED DATE: Friday, 9 June 2023 |