

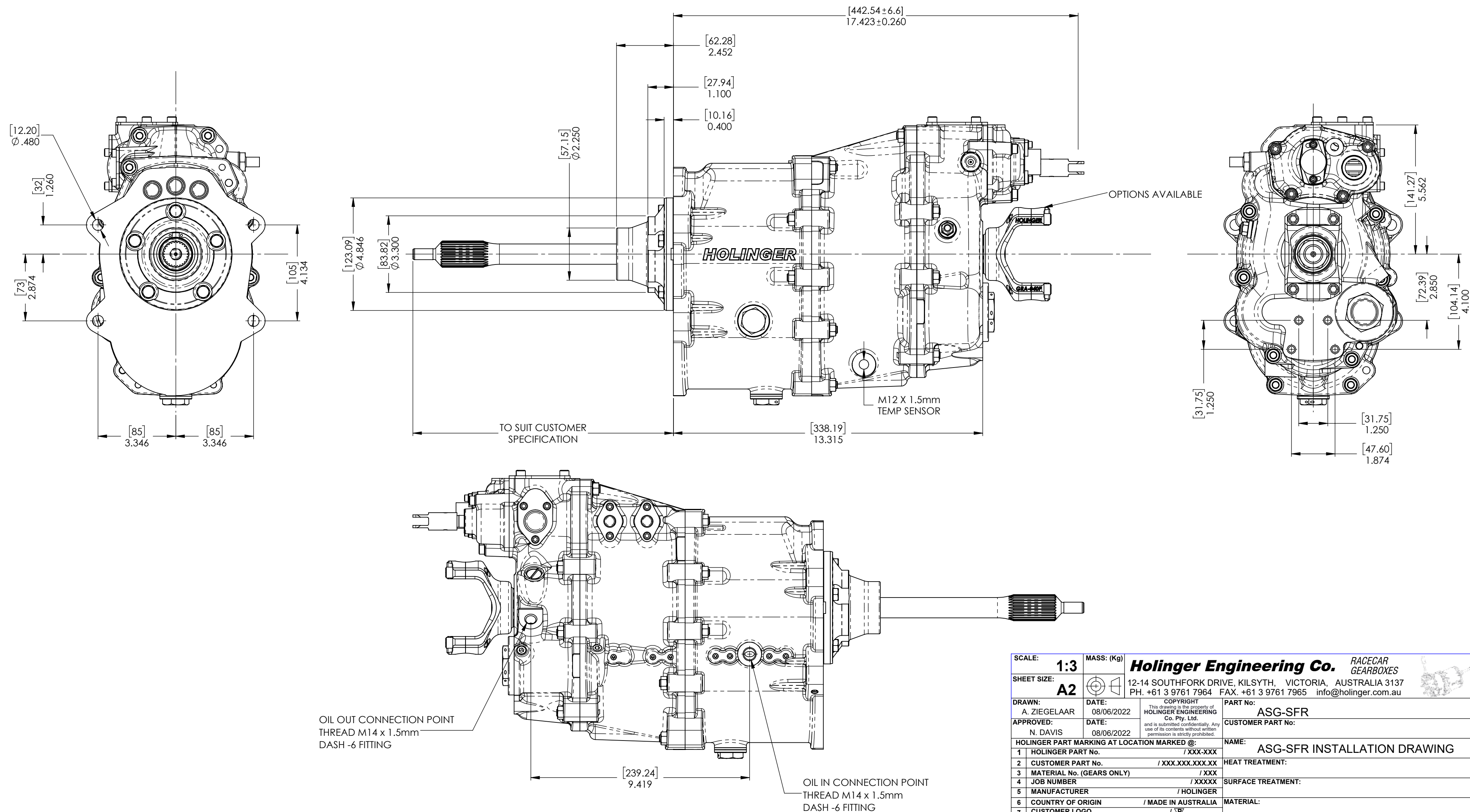
# SG-SFR SEQUENTIAL TRANSMISSION

TRANSMISSION INCLUDES:

- GEARBOX
- CUSTOM QUILL SHAFT
- CABLE OPERATED NEUTRAL LOCKOUT
- OUTPUT FLANGE

OPTIONS INCLUDE:

- BELLHOUSING
- FRONT ADAPTOR
- GEAR LEVER



SCALE: <b>1:3</b>	MASS: (Kg)	<b>Holinger Engineering Co.</b> RACECAR GEARBOXES	
SHEET SIZE: <b>A2</b>		12-14 SOUTHFORK DRIVE, KILSYTH, VICTORIA, AUSTRALIA 3137 PH. +61 3 9761 7964 FAX. +61 3 9761 7965 info@holinger.com.au	
DRAWN: A. ZIEGELAAR	DATE: 08/06/2022	COPYRIGHT This drawing is the property of HOLINGER ENGINEERING Co. Pty. Ltd. and is submitted confidentially. Any use of its contents without written permission is strictly prohibited.	PART No: <b>ASG-SFR</b>
APPROVED: N. DAVIS	DATE: 08/06/2022		CUSTOMER PART No:
HOLINGER PART MARKING AT LOCATION MARKED @:		NAME: <b>ASG-SFR INSTALLATION DRAWING</b>	
1 HOLINGER PART No.	/ XXX-XXX	HEAT TREATMENT:	
2 CUSTOMER PART No.	/ XXX.XXX.XXX.XX	SURFACE TREATMENT:	
3 MATERIAL No. (GEARS ONLY)	/ XXX	MATERIAL:	
4 JOB NUMBER	/ XXXXX		
5 MANUFACTURER	/ HOLINGER		
6 COUNTRY OF ORIGIN	/ MADE IN AUSTRALIA		
7 CUSTOMER LOGO	/		
GENERAL TOLERANCES UNLESS OTHERWISE STATED:		GENERAL MACHINED SURFACE FINISH:	
LINEAR	ANGULAR	DIAMETRAL	
0.000 $\pm$ 0.002	0 $\pm$ 1°	0.000 $\pm$ 0.002	
0.00 $\pm$ 0.005	0.0 $\pm$ 0.2°	0.00 $\pm$ 0.005	
		CHECK DIMENSIONS ACCORDING TO HOLINGER I.P.I. SHEET	
		PRINTED DATE: Tuesday, 28 January 2025	