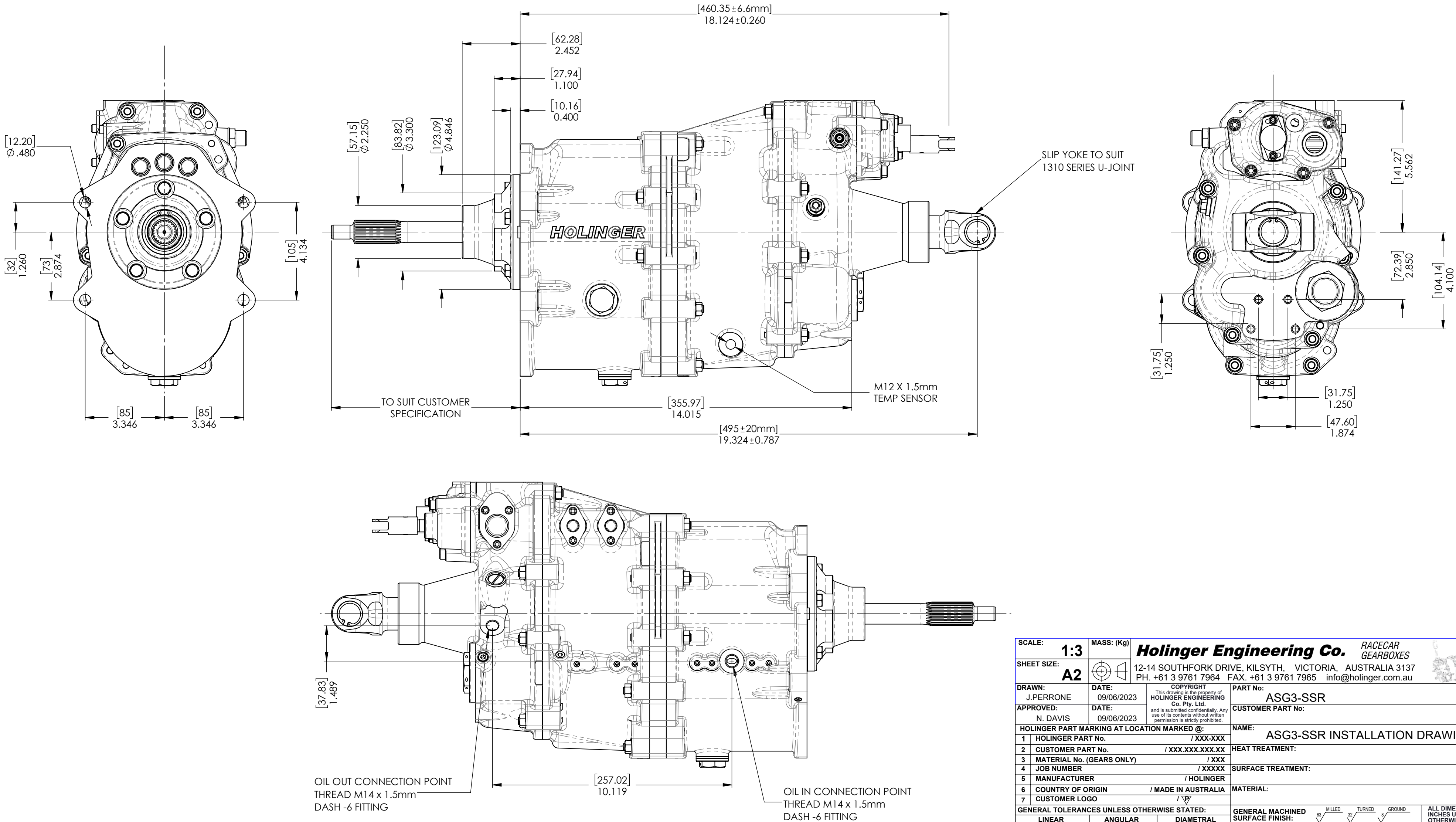


SG3-SSR SEQUENTIAL TRANSMISSION

- TRANSMISSION INCLUDES:**
- GEARBOX
 - CUSTOM QUILL SHAFT
 - CABLE OPERATED NEUTRAL LOCKOUT
 - BILLET SLIP YOKE

- OPTIONS INCLUDE:**
- BELLHOUSING
 - FRONT ADAPTOR
 - GEAR LEVER



SCALE: 1:3	MASS: (Kg)	Holinger Engineering Co. RACECAR GEARBOXES	
SHEET SIZE: A2		12-14 SOUTHFORK DRIVE, KILSYTH, VICTORIA, AUSTRALIA 3137 PH. +61 3 9761 7964 FAX. +61 3 9761 7965 info@holinger.com.au	
DRAWN: J.PERRONE	DATE: 09/06/2023	COPYRIGHT This drawing is the property of HOLINGER ENGINEERING Co. Pty. Ltd. and is submitted confidentially. Any use of its contents without written permission is strictly prohibited.	PART No: ASG3-SSR
APPROVED: N. DAVIS	DATE: 09/06/2023		CUSTOMER PART No:
HOLINGER PART MARKING AT LOCATION MARKED @:		NAME: ASG3-SSR INSTALLATION DRAWING	
1 HOLINGER PART No.	/ XXX-XXX	HEAT TREATMENT:	
2 CUSTOMER PART No.	/ XXX.XXX.XXX.XX	SURFACE TREATMENT:	
3 MATERIAL No. (GEARS ONLY)	/ XXX	MATERIAL:	
4 JOB NUMBER	/ XXXXX	GENERAL MACHINED SURFACE FINISH:	
5 MANUFACTURER	/ HOLINGER	ALL DIMENSIONS IN INCHES UNLESS OTHERWISE STATED	
6 COUNTRY OF ORIGIN	/ MADE IN AUSTRALIA	CHECK DIMENSIONS ACCORDING TO HOLINGER I.P.I. SHEET	
7 CUSTOMER LOGO	/	PRINTED DATE: Friday, 9 June 2023	
GENERAL TOLERANCES UNLESS OTHERWISE STATED:			
LINEAR	ANGULAR	DIAMETRAL	
0.000 ±0.002	0±1°	0.000 ±0.002	
0.00 ±0.005	0.0±0.2°	0.00 ±0.005	