

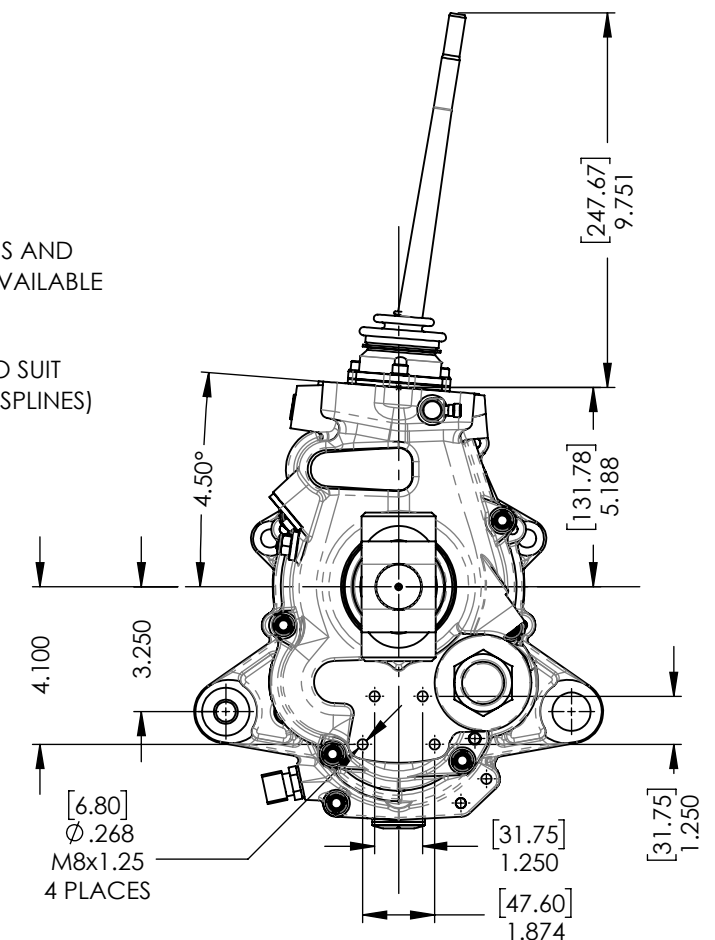
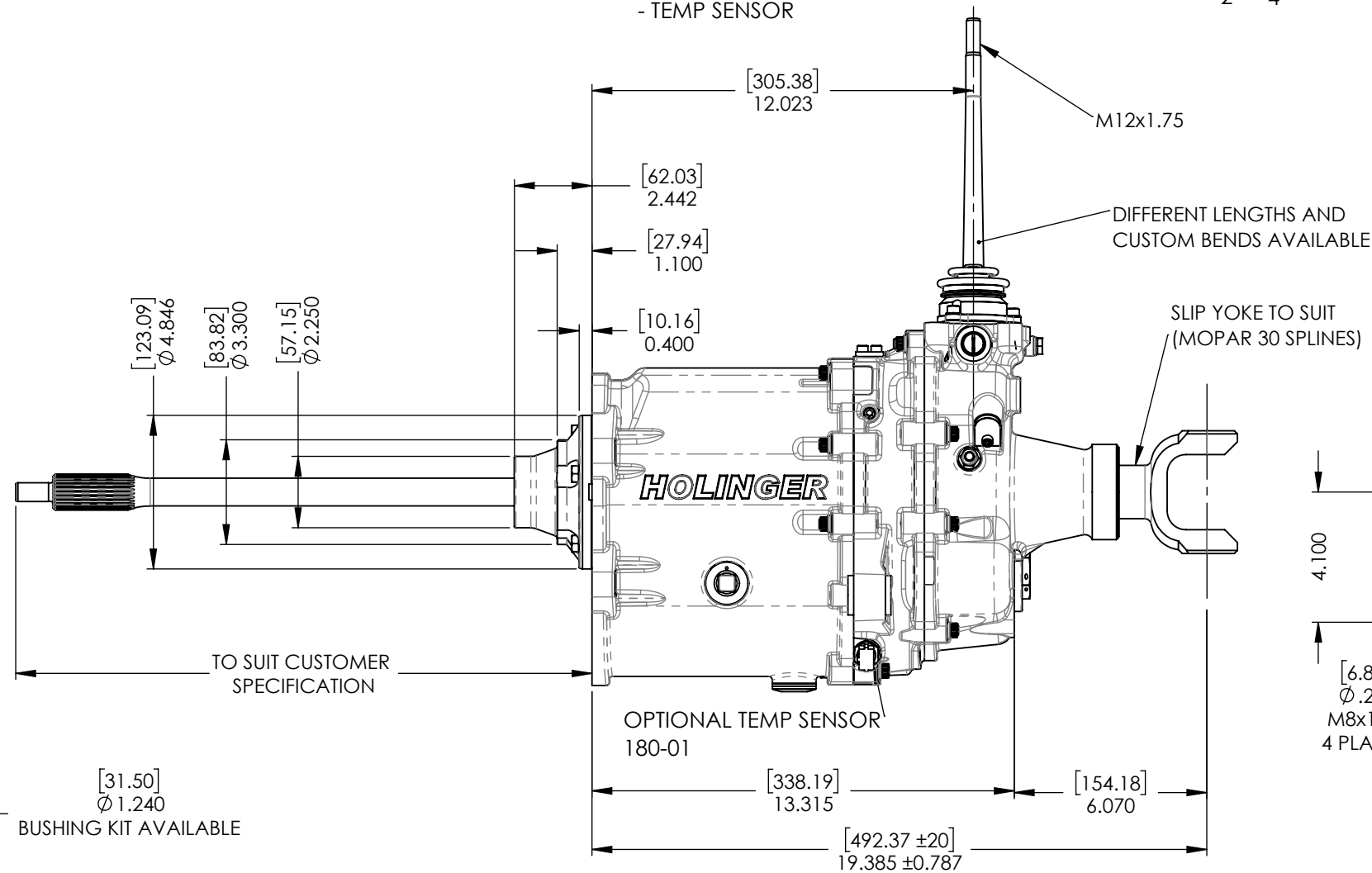
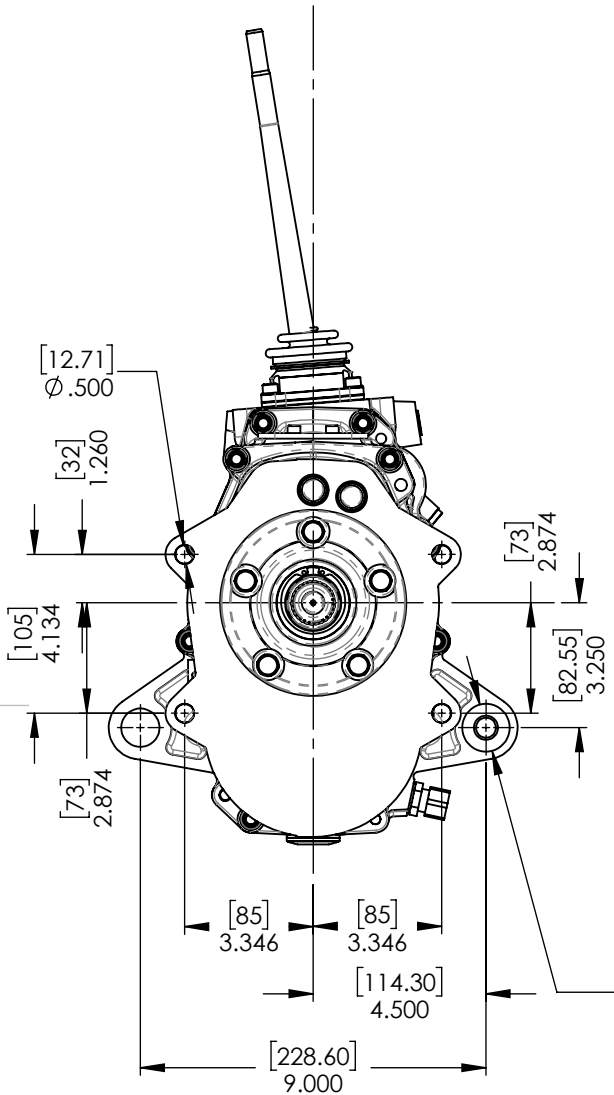
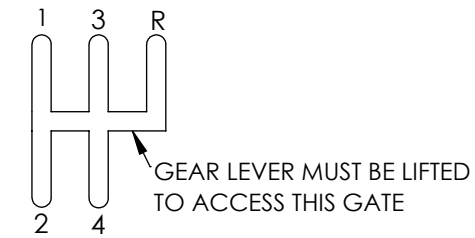
RD4-HS H-PATTERN TRANSMISSION

TRANSMISSION INCLUDES:

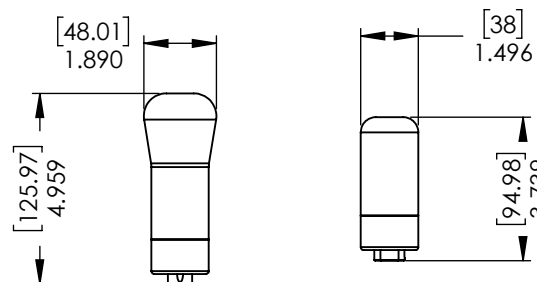
- GEARBOX
- CUSTOM QUILL SHAFT
- GEAR LEVER

OPTIONS INCLUDE:

- BELLHOUSING
- FRONT ADAPTOR
- GEAR KNOB
- MOUNT BUSHES
- SLIP YOKE (1350 SERIES)
- TEMP SENSOR

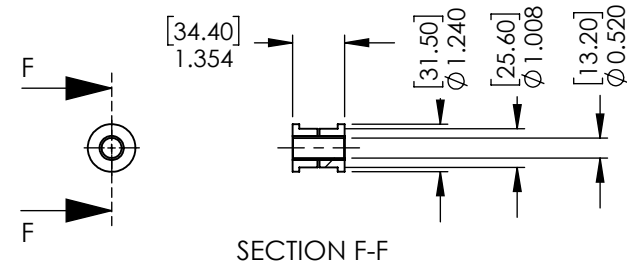


OPTIONAL GEAR KNOBS



NOTE: GEAR KNOBS WILL SCREW ON BY ~20mm

OPTIONAL BUSHING KIT



SCALE: 1:5	MASS: (g)	Holinger Engineering Co. RACECAR GEARBOXES	
SHEET SIZE: A3		12-14 SOUTHFORK DRIVE, KILSYTH, VICTORIA, AUSTRALIA 3137 PH. +61 3 9761 7964 FAX. +61 3 9761 7965 info@holinger.com.au	
DRAWN: J.PERRONE	DATE: 11/04/2023	COPYRIGHT This drawing is the property of HOLINGER ENGINEERING Co. Pty. Ltd. and is submitted confidentially. Any use of its contents without written permission is strictly prohibited.	PART No: ARD4-HS
APPROVED: B.GELLERT	DATE: 11/04/2023		CUSTOMER PART No: -
HOLINGER PART MARKING AT LOCATION MARKED @:		NAME: ARD4-HS INSTALLATION DRAWING	
1	HOLINGER PART No. / XXX-XXX	HEAT TREATMENT: -	
2	CUSTOMER PART No. / XXX.XXX.XXX.XX	SURFACE TREATMENT: -	
3	MATERIAL No. (GEARS ONLY) / XXX	MATERIAL: -	
4	JOB NUMBER / XXXXX		
5	MANUFACTURER / HOLINGER		
6	COUNTRY OF ORIGIN / MADE IN AUSTRALIA		
7	CUSTOMER LOGO /		
GENERAL TOLERANCES UNLESS OTHERWISE STATED:		GENERAL MACHINED SURFACE FINISH: 63 MILLED 32 TURNED 8 GROUND	
LINEAR		ANGULAR	
0.000 ±0.002		0 ±1°	
0.00 ±0.005		0.0 ±0.2°	
DIAMETRAL		0.000 ±0.002	
		0.00 ±0.005	
# CHECK DIMENSIONS ACCORDING TO HOLINGER I.P.I. SHEET		PRINTED DATE: Friday, 26 May 2023	